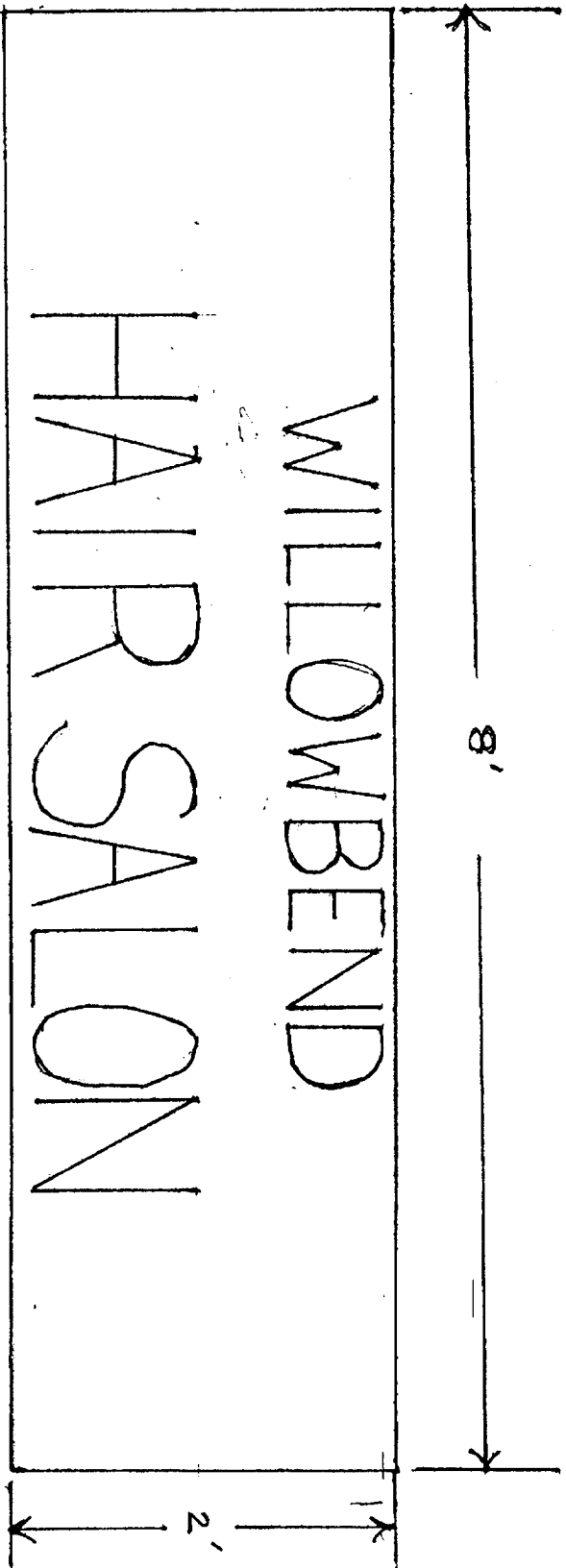


**WILLOWBEND CENTER**

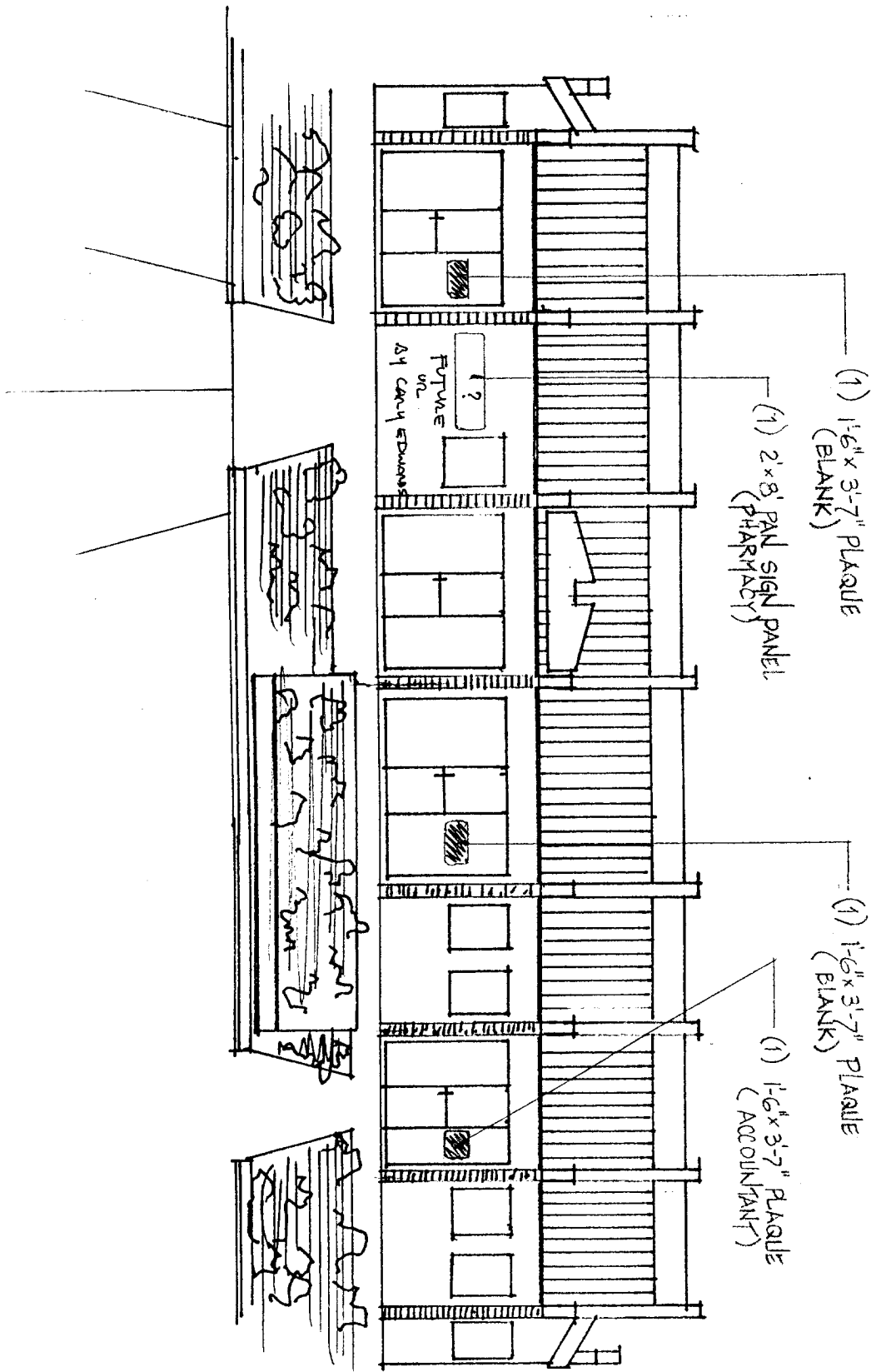
**SIGN PROGRAM**

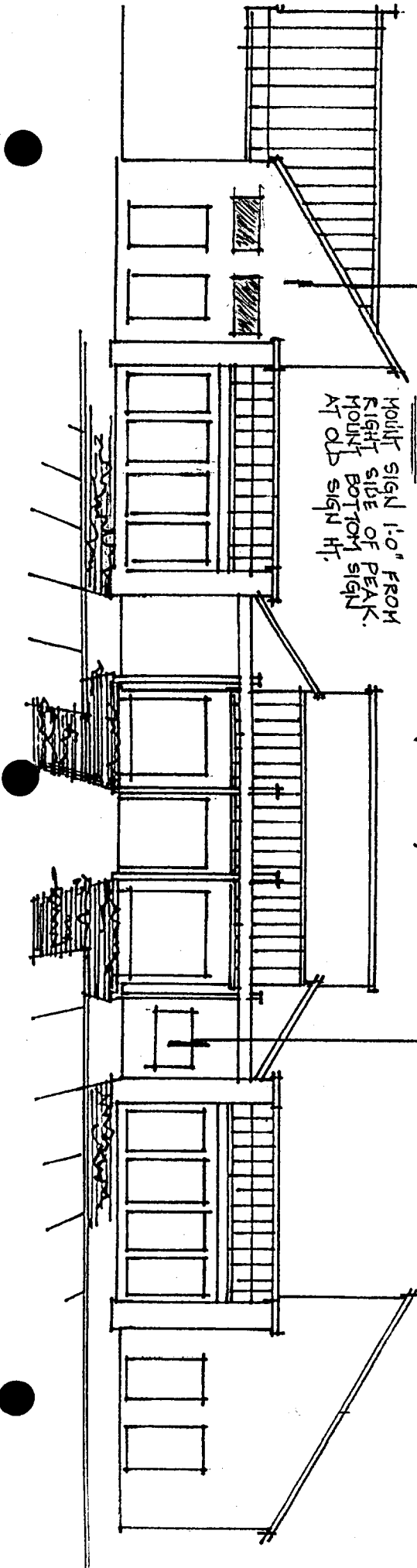
**3-23-1988**

**PEACHTREE CITY, GA.**



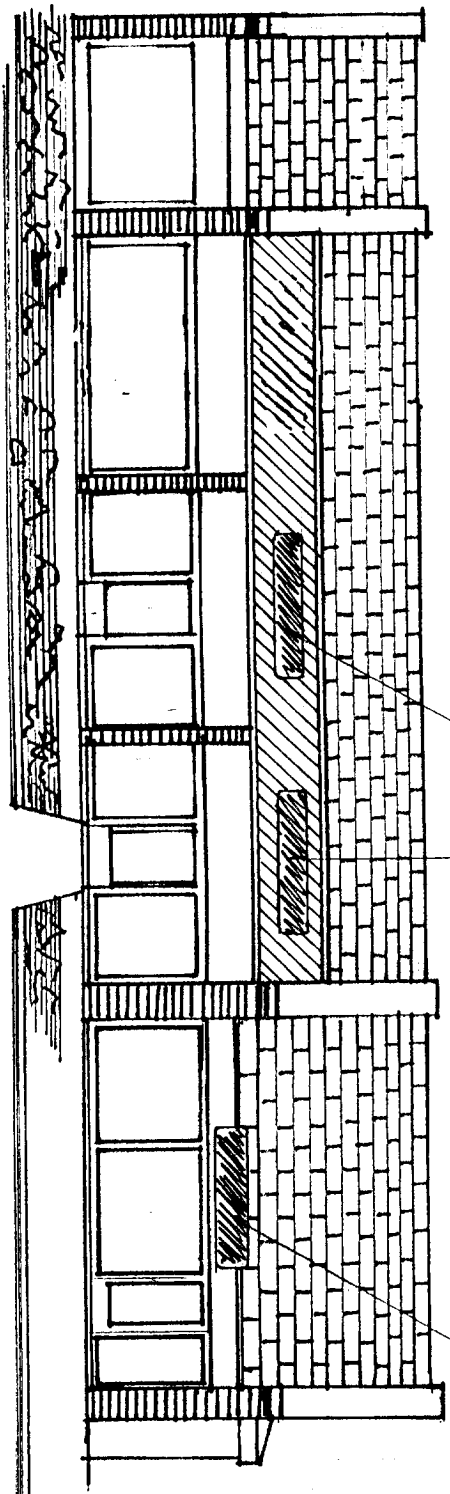
Sign Background is to be a dark bronze sheet metal  
Letters will be "vanilla" plexiglass with black trim.





NOTE:  
 MOUNT SIGN 1'-0" FROM  
 RIGHT SIDE OF PEAK.  
 MOUNT BOTTOM SIGN  
 AT OLD SIGN HT.

- (1) PAPP CLINIC SIGN  
 (PANEL SIZE NOT YET DETERM.)
- (2) 2' x 8' PANEL SIGN PANELS  
 (REALTY - THERAPY)



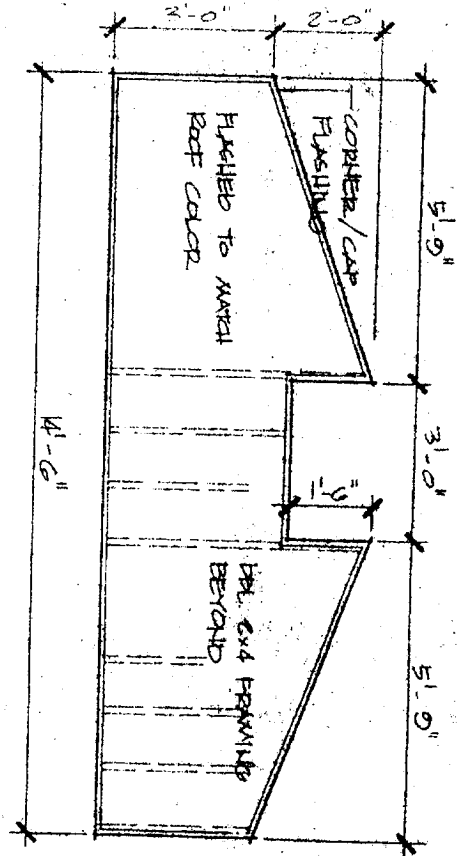
(1) 2'x8' PAN SIGN PANEL  
(LOANS)

(1) 2'x8' PAN SIGN PANEL  
(V+V LAUNDRY)

(1) 2'x8' PAN SIGN PANEL  
(AL'S ONE HOUR)

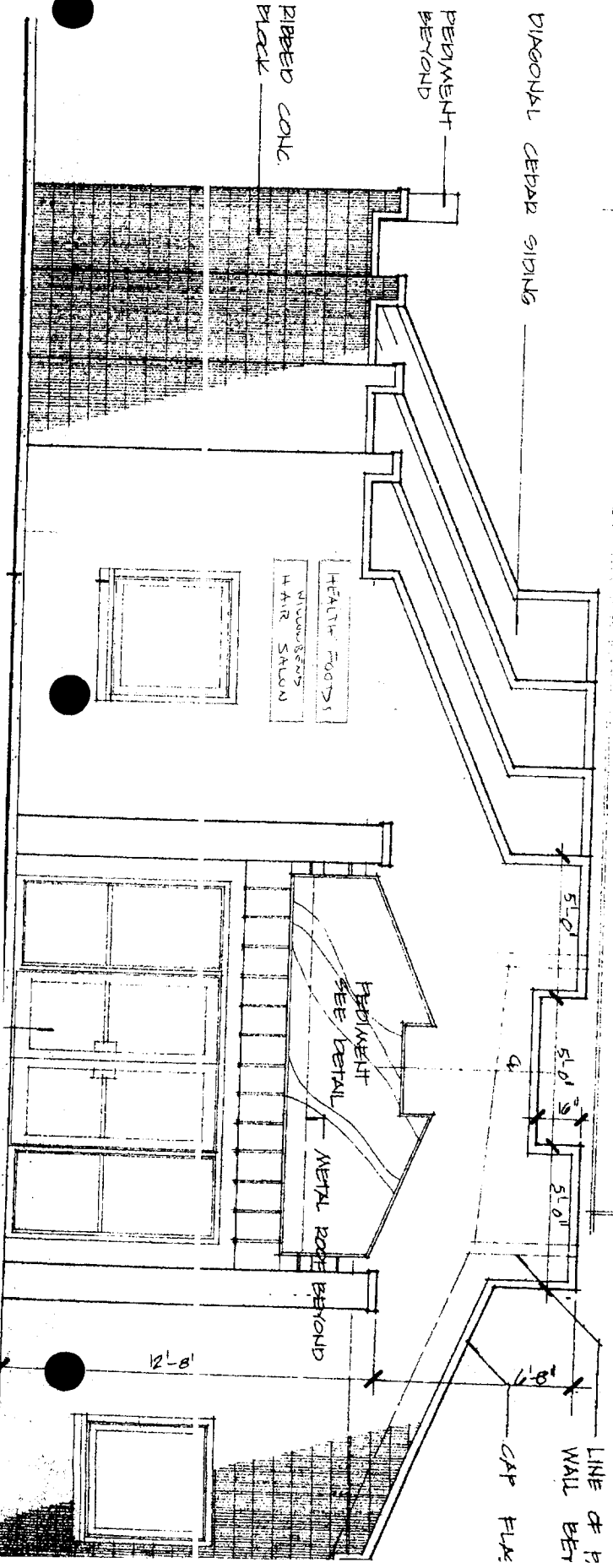
RAMP  
UP

**PEDIMENT ELEVATION  
DETAIL 3/8" (NORTH ELEVATION)**



**SECTION**

**PEDIMENT ELEVATION  
DETAIL 3/8" (EAST ELEVATION)**



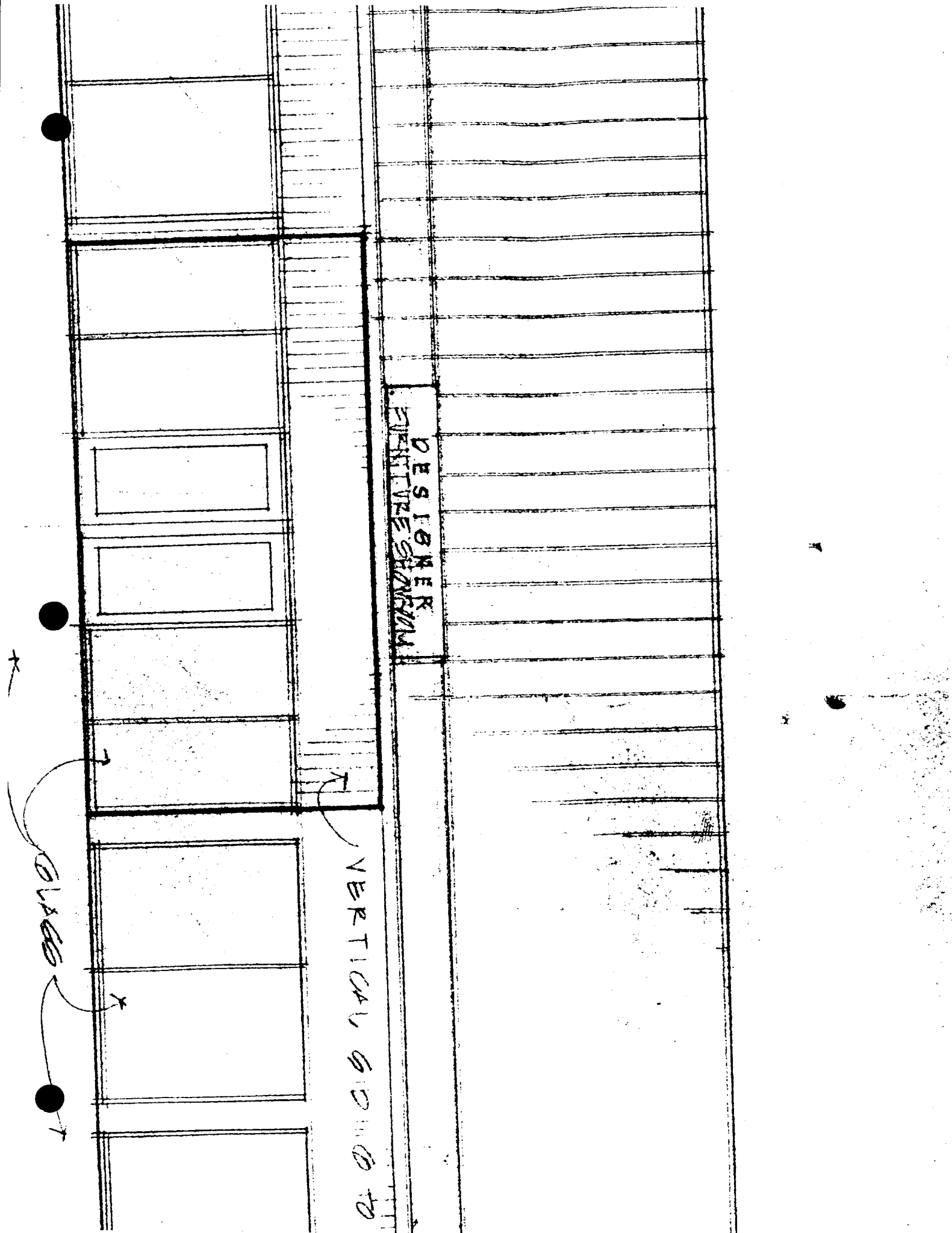
**CARRIAGE  
DETAIL**



DESIGNER  
SIGNATURE

VERTICAL SIDING TO

GLASS

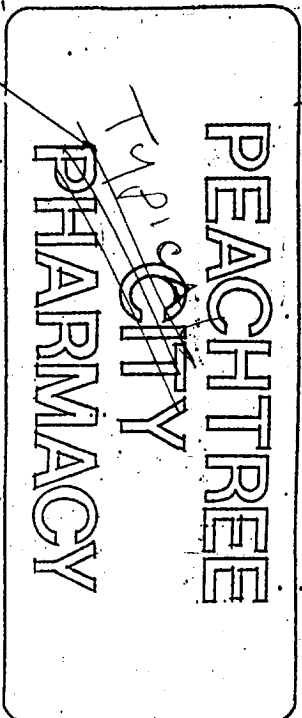


2/22/88

3'-9 1/2"

1/4" Black Plexiglas w/ polished edges

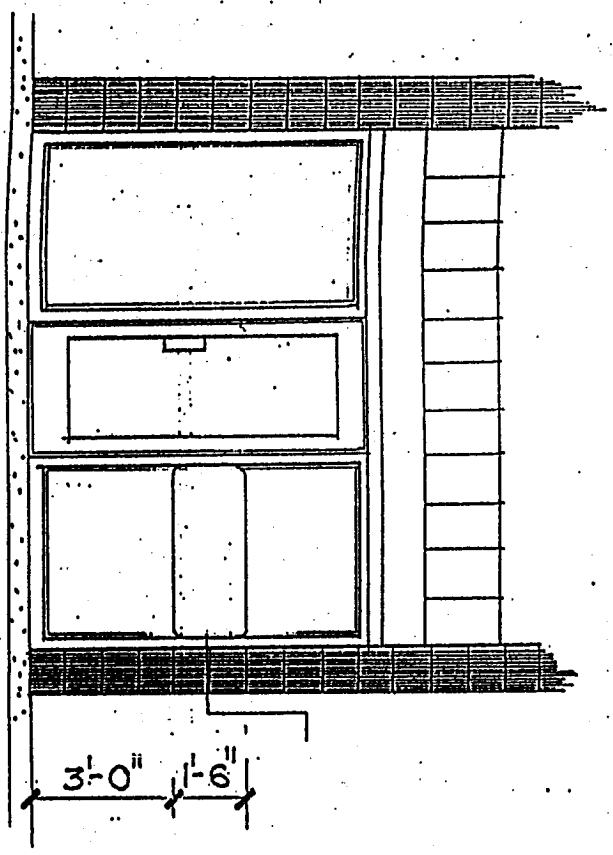
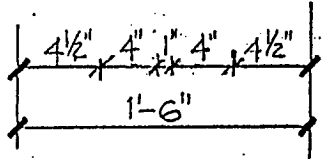
TYPICAL



4" Helvetica vinyl letters (ivory)

ELEV. of DOOR SIGN

Sign mounted to glass with vel-cro (black) on face side, sign inside of stop.



ELEVATION of DOOR SIGN